

Job #117049519

HB Maintenance Tune Up (1)

Job Details

Date

2024-07-12

Customer Name

Alastair McIntyre

Address

167 Raleigh Street, Chatham, ON N7M 2N3 Canada

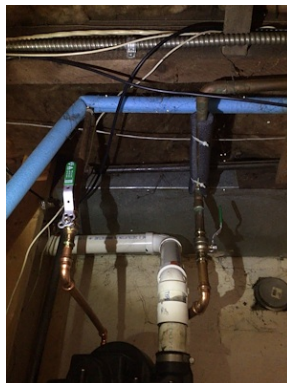
Technician On Site

Emily Piggott

Key Points 1



Key Points 2



Key Points 3



Technicians Comments

Please note anything of importance you found during todays visit.

Continue with annual maintenance

Technicians Recommendations

Please note any recommendations or required repairs.

Continue with annual maintenance

Before Photos of Equipment Serviced Today

Stand back and take a photo of the equipment with the doors off, as you found it before you have performed your maintenance.



After Photos of Equipment Serviced Today

Stand back and take a photo of the equipment with the doors off, after you've performed your maintenance.



Equipment Life Expectancy

Green rated equipment and components are in "good as new" condition.

Yellow rated equipment is considered aging, components are functioning, but are at risk of sudden failure.

Red rated equipment and components are considered failed and require replacement.



Equipment Efficiency

Green rated equipment is operating at designed efficiency

Yellow rated outside is operating outside of designed efficiency and will require service.

Red rated equipment is operating far beyond design efficiency and needs immediate attention.



Are Additional Services or Repairs Being Completed Today?

Is service being performed today to repair or increase system performance?

No

Final Check and Walkthrough

Check that the unit is running from the thermostat before you leave to avoid callbacks.

Yes

HB Seal of Approval

Picture of the HB sticker on the equipment



Equipment Details

Make:

Rheem

Model #:

PROG40S-36NCN67PV-C

Serial #:

Q482006304

Photo of Rating Plate(s)

photo of the rating plate(s) of the equipment being worked on today. please make sure the full model and serial are clear and visible.



Information for Today's Visit

This maintenance is for your:

Domestic Hot Water Maintenance

What type of water heater?

Power Vent

Water Heater Maintenance for Protection, Performance and Peace of Mind

Operational Inspection

Operational Check

Does the unit turn on and run? For a proper maintenance to be performed the equipment must be in operational condition

Yes

Is the tank over 12 years old?

No

Temperature Control Aqua Stat

Inspect the temperature control, ensure the DHW temperature setting is set to the customers liking. Typically 120F



Inducer Motor

Check the overall condition of the inducer motor. Listen for bearing wear and look for oil leakage.



Photo of the Burner Chamber

Photo of the burner chamber through the site glass while the unit is running.



Burner and Pilot Assembly

Inspect burner assembly and combustion chamber. Manufacturer recommends a teardown and cleaning of the burner assembly every 4 years. If burners are beyond cleaning, replacement will be required.



Equipment Safety Circuit

Inspect and test all safety circuit components. Put a checkmark next to safeties that pass (or if they are not applicable)

- Pressure Switch
- High Limit Switch

What type of Ignition System?

Hot Surface Ignitor

Ignition System

Visually Inspect the ignition system.



Hot Surface Ignitor Amp Draw

Amp draw of the HSI, if testing is possible. Manufacturer recommends the ignitor be replaced every 5 years. Additional service may be required.



Flame Rectification

Visually Inspect and test the flame sensor/thermocouple/powerpile. Manufacturer recommends the sensor be replaced every 5 years. Additional service may be required.



Is a Mixing Valve Installed?

Test and inspect the mixing valve on your water heater. Outlet temperature should be set to 120F
No

Flush Water Tank

Power down the unit and flush out the water heater for 5 minutes to eliminate scale and mineral build up that will impact operation, efficiency and shorten the lifespan of your unit. Complete your visual inspection while the unit flushes. CAUTION: If the drain is old and plastic, recommend a brass drain fitting. Ensure the tank is completely refilled before Powering the unit back on.



Temperature and Pressure Safety Valve

WARNING: Talk to customer before testing. Communicate to the customer that relief valves must be tested annually and commonly leak after testing. Manufacturer recommends valve be replaced every 5 years, but must be replaced if valve leaks after testing. Take a photo of the valve being tested.



Temperature and Pressure Safety Valve

Pass

Flue Gas Combustion Analysis

Photo of the combustion analyzer screen in the flue after the equipment has been running for 3-5 minutes



Ambient Carbon Monoxide

Check for ambient carbon monoxide in the area of the water heater. include a photo of the analyzer screen.



Electrical System Inspection

Inspect the electrical system of the unit for corrosion, loose connections, frayed wires, or any potential hazards.



Water Piping Inspection

Inspect the water piping from the shut off to the unit for signs of leaks and damage.



Gas Piping Inspection

Inspect the gas piping from the shut off to the appliance and test for gas leaks. Check for outdated components like spring shut offs and thread protectors. additional service may be required.



Venting Inspection

Inspect the Venting for cracks, damage or leaking. Inspect termination for blockages and damage.

