

VIEWS

IN

THE CANADAS,

NEW BRUNSWICK, AND NOVA SCOTIA.

DRAWN FROM NATURE,

BY

LIEUT.-COL. BOUCHETTE,

AND HIS SONS,

MESSRS. JOSEPH; R. S. M.; AND J. F. BOUCHETTE.



MONUMENT to WOLFE and MONTCALM.
QUEBEC.

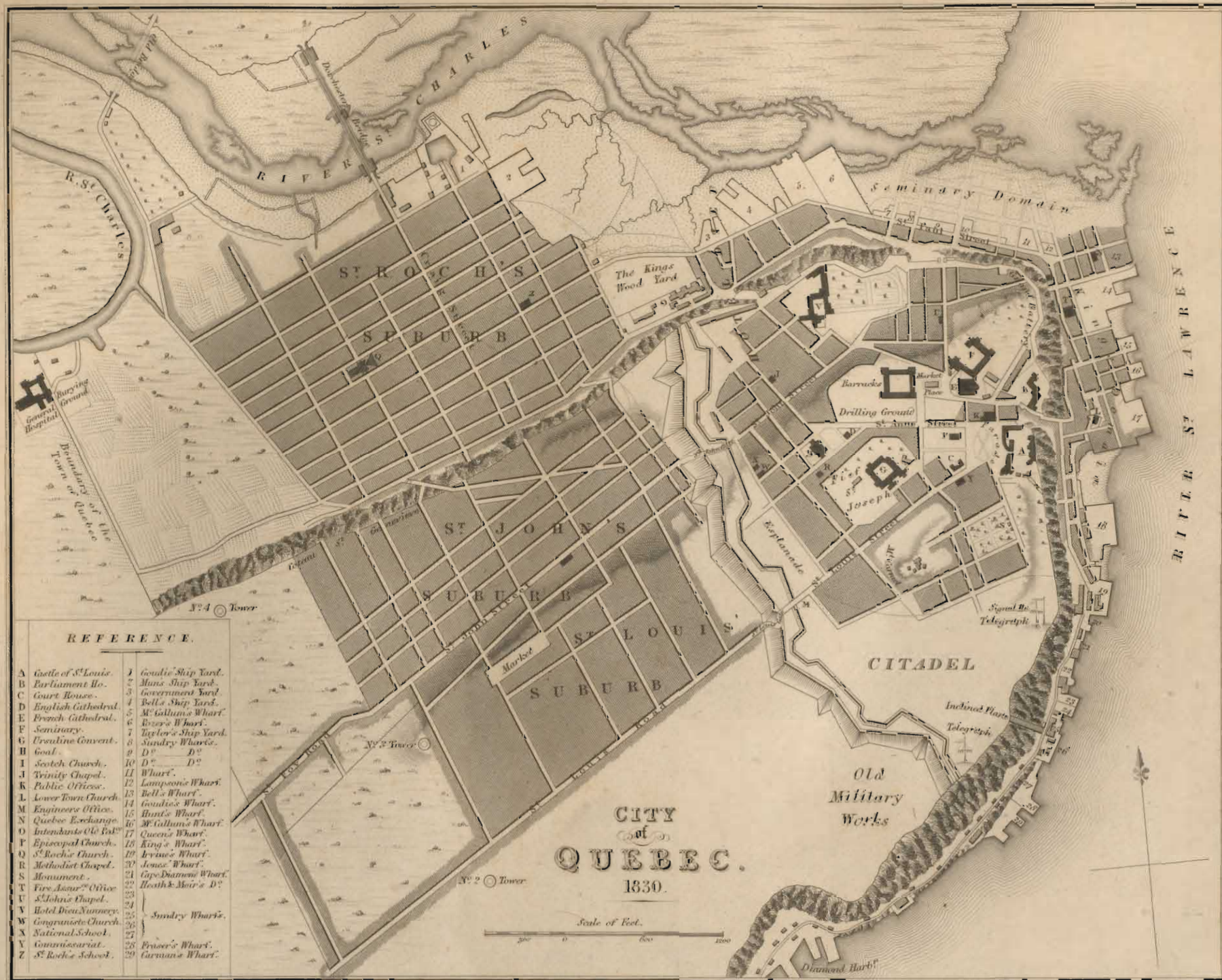
Day & Haghe Lith^{rs} to the King, 177 Gate St^h Line Im F⁴



R. S. M. Bouchelet del.

CITY OF QUEBEC.
Taken from the Harbour

Deer & Regue, Litho to the King, P. Gave St. Jans. 1800. P. 42.



REFERENCE.

- | | |
|------------------------|------------------------------------|
| A Castle of St. Louis. | J Godin's Ship Yard. |
| B Parliament Ho. | K King's Ship Yard. |
| C Court House. | L Government Yard. |
| D English Cathedral. | M Bell's Ship Yard. |
| E French Cathedral. | N St. Gallan's Wharf. |
| F Seminary. | O River's Wharf. |
| G Ursuline Convent. | P Taylor's Ship Yard. |
| H Goal. | Q Sundry Wharves. |
| I Scotch Church. | R D ^o D ^o |
| J Trinity Chapel. | S D ^o D ^o |
| K Public Offices. | T Wharf. |
| L Lower Town Church. | U Lampson's Wharf. |
| M Engineers Office. | V Bell's Wharf. |
| N Quebec Exchange. | W Godin's Wharf. |
| O Intendants Office. | X St. Gallan's Wharf. |
| P Episcopal Church. | Y Queen's Wharf. |
| Q St. Roch's Church. | Z King's Wharf. |
| R Methodist Chapel. | 19 Lewis's Wharf. |
| S Monument. | 20 Jones's Wharf. |
| T First Assize Office. | 21 Cape Diamond Wharf. |
| U St. John's Chapel. | 22 Heath & Moir's D ^o . |
| V Hotel Dieu Nursery. | 23 Sundry Wharves. |
| W Congregate Church. | 24 |
| X National School. | 25 |
| Y Commissariat. | 26 |
| Z St. Roch's School. | 27 |
| | 28 Praser's Wharf. |
| | 29 German's Wharf. |

Reduced by P. Curzon.

Engraved by J. G. Walker.



Horrocks Distillery & Mill on the River Fries, Summers

Engraved by G. E. Schuchman

J. H. Schuchman del.



Long's Farm on Lake Témiscouata, at the entrance of the Saguenay



View from New York in the River Hudson

J. H. Johnson del.

Printed by J. H. Johnson.



Fort Chambloy

Engraved by G. B. ...



New York, 1850.

Old Pro Line.

New York, 1850.

Old Pro Line.

Engraved by G. B. Bechtle.

KILLBOURN'S MILLS, STANSTEAID, I. P. CANADA & THE UNITED STATES SETTLEMENTS, VERM.

South of the Province Line—Lat 45° N.

W. D. Smith to the King of Great Britain, 1764.





TRADING POST ON THE RIVER AUX RATS



THE FORGES, RIVER ST MAURICE



FALLS OF THE GRAND MERE ON THE ST MAURICE

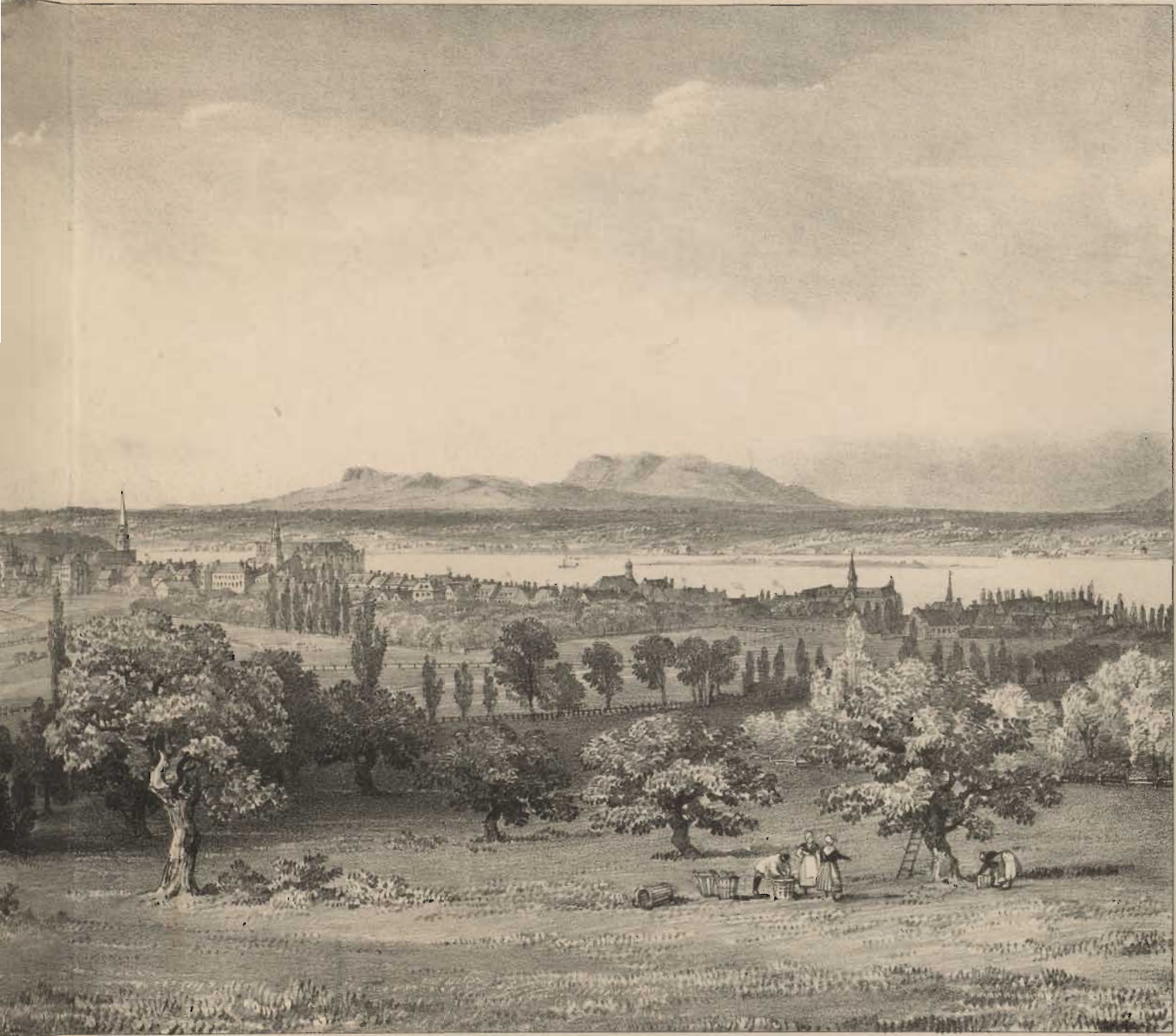
Del. & Engr. L. L. L. & Co. for the Proprietors



On Stone by L. Hagre.

Printed & Sold by John W. Miller, King St. Corner 5th

VIEW OF THE CITY OF
TAKEN FROM THE MOUNTAIN

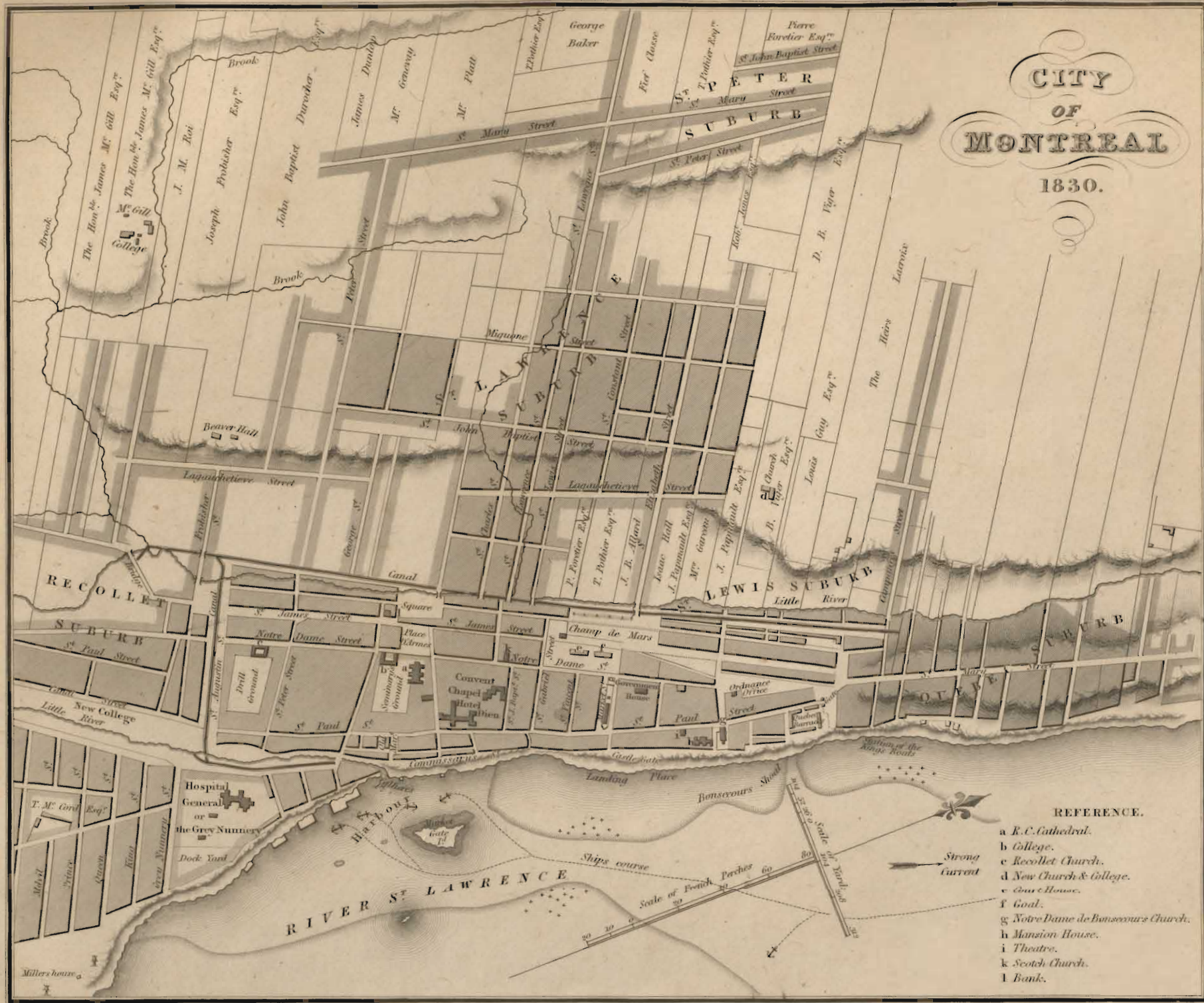


Jos^{ph} Bouchette Jun^r D.S.G. del^t

CITY OF MONTREAL.
VIEW FROM THE MOUNTAIN.

CITY OF MONTREAL

1830.



REFERENCE.

- a R.C. Cathedral.
- b College.
- c Recollet Church.
- d New Church & College.
- e Court House.
- f Goal.
- g Notre Dame de Bonsecours Church.
- h Mansion House.
- i Theatre.
- k Scotch Church.
- l Bank.

UPPER CANADA.



BROCK'S MONUMENT.
QUEENSTON HEIGHTS.

Look Eagle Lake to the West.

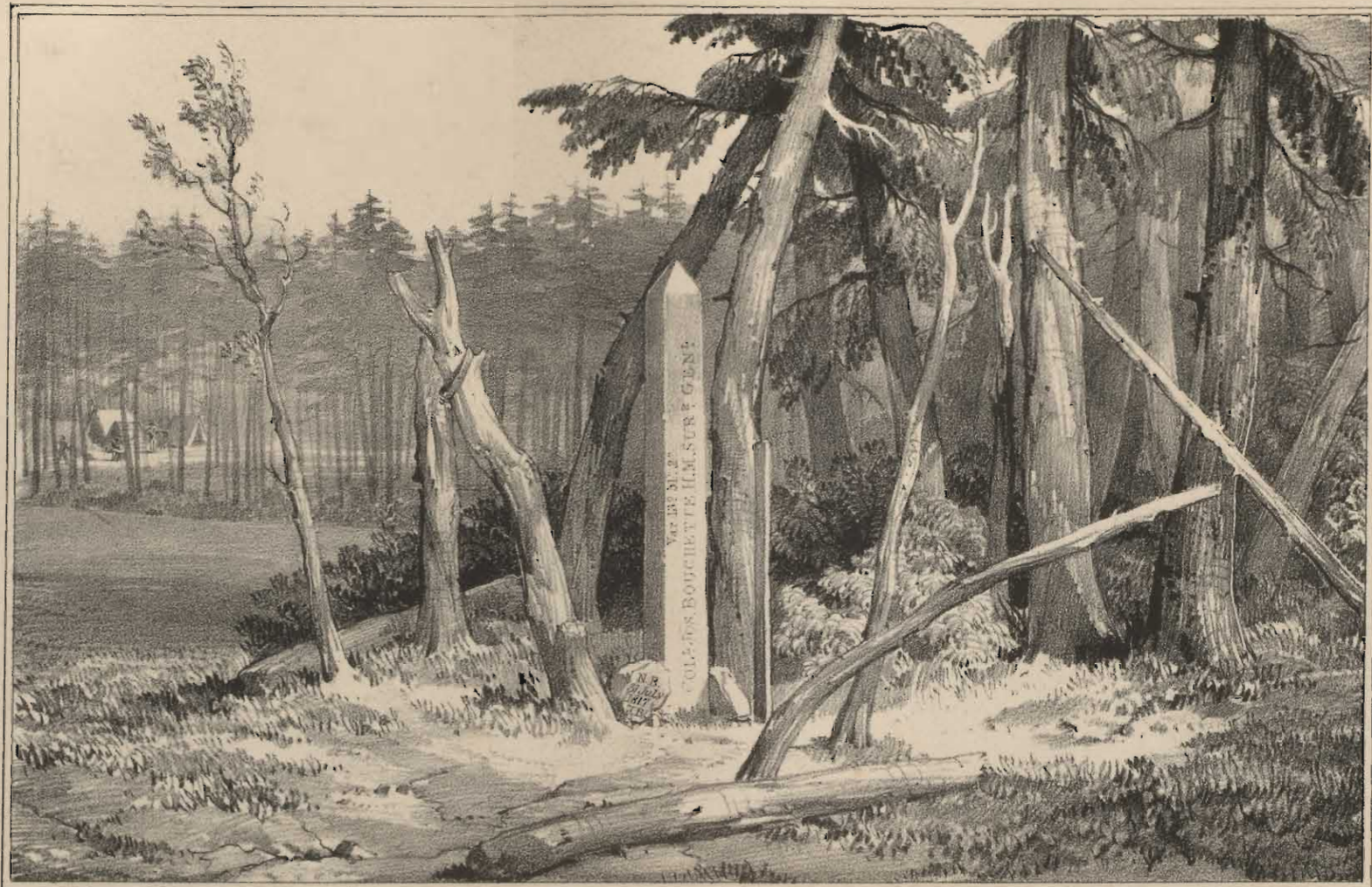


on Stone by L. Haghe

W. Day Lith. N. York St.

UNION BRIDGE: BY TOWN.
OTTAWA RIVER.

R. S. M. Bouchette Esq. del.



On Stone by L. Haghe.

—etched by Col^d Bouchette 31 July 1817.

INSCRIPTION on the NEW MONUMENT erected at the SOURCE of the ST CROIX on the 31st JULY, 1817.

N Face. COL. JOS. BOUCHETTE ILM. SUR. & GEN. Var 13° 51' 2" West. E Face. New Brunswick July 31 1817 printed in same manner.
 S Face JOHN JOHNSON U.S. SURVEYOR & S.G. VT. W Face United States 31 July 1817. At the bottom of the Monument on the East
 and West Faces are two Stones inclined marked respectively with the initials of the Surveyors, the date & also the initials of the
 different Territories, viz on the West side N B (New Brunswick) 31 July 1817. — J B (Joseph Bouchette), on the East side U S (United States)
 31 July 1817. J J (John Johnson) the whole printed in capital letters. — A an Iron Hoop on a Beech Tree old Monument fixed in 1797.



By J. Hughes. Look'd to the East of Gate of Lane. Jan. P. 4

On Street to L. Hughes

VIEW OF BELFAST FROM BELFAMOUTH GOVIE.



W. J. B. J. J. J.

NEW GOVERNMENT HOUSE,
Frederickton, N. B.

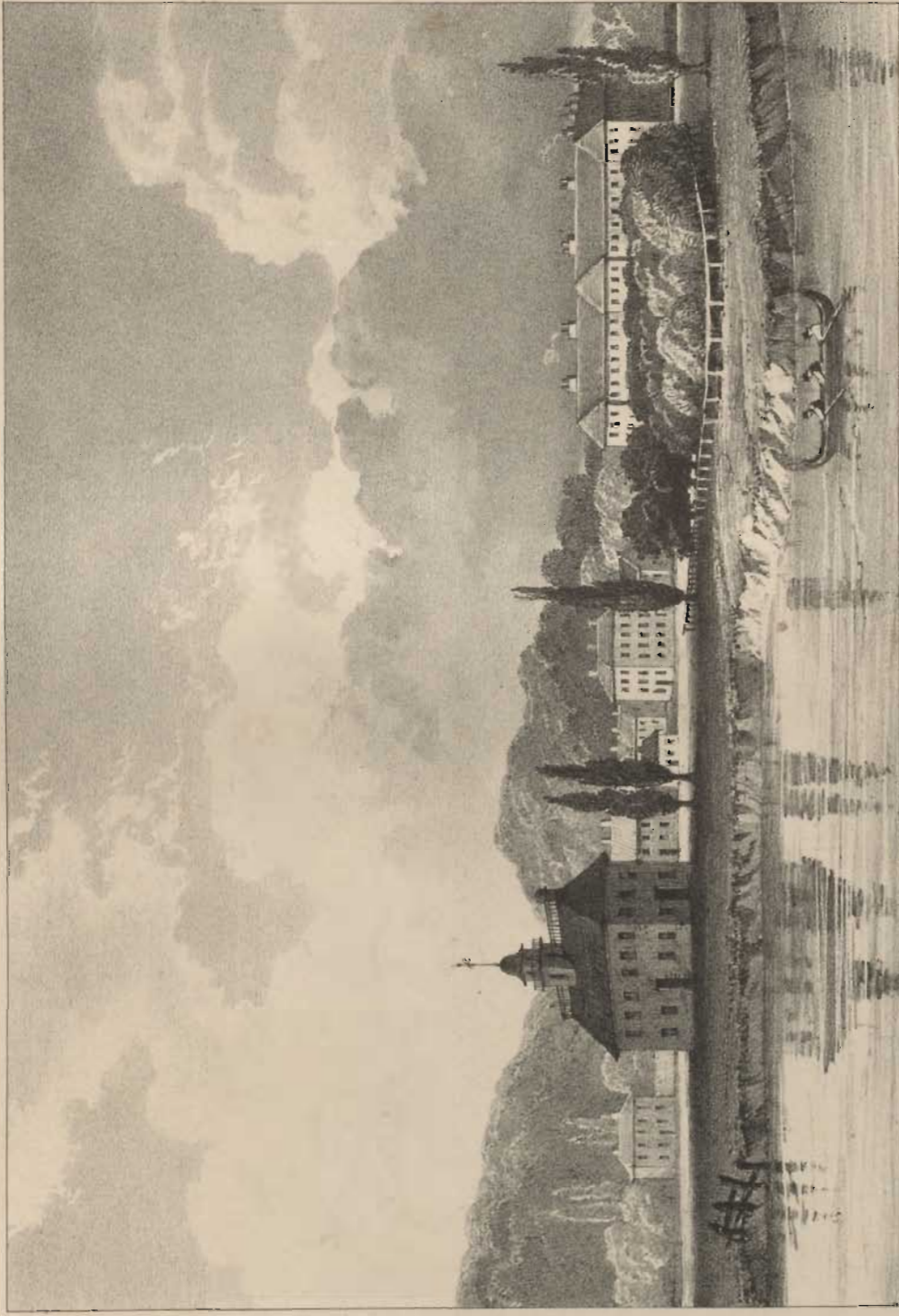
Drawn by J. J. J. J. J.

Drawn by J. J. J. J. J.



18
View of Haguenau, to the King's Garden, St. Louis, 1804.

ON THE KENTUCKIAN NEAR ST. JOHNS.



By the High Light is the King's Gate, Lane Inn, &c.

BARBACANS AND MARKET HOUSE. FREDERICTON. New Brunswick.

By a Lady



J. C. B. 1840

W. C. B. 1840

The Great Falls on the River St. John, New Brunswick.